

BATHYMETER SYSTEMS

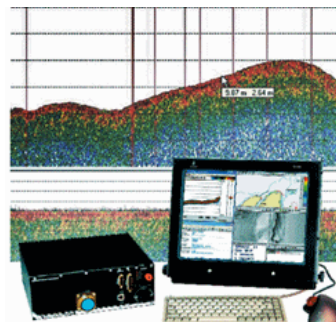
Single Beam Echo Sounder (SBES)

Kongsberg EA 400

EA400 is a single beam echo sounders, by use of two frequencies, has the possibility to detect the second layer bottom by using the lowest frequency. The sediment of the bottom will depend of the penetration depth. Refer to picture: frequencies 33 kHz and 200 kHz.

Benefits

- A wide range of available frequencies
- Transducers are side looking transducers
- Sound velocity compensation
- Side-looking
- Sub-bottom expansion
- Easy integration of third party software
- Complete operation station with software and interface possibilities



Kongsberg EA400 Single beam echo sounder

Hydrostar 4300



Hydrostar 4300 Single beam echo sounder

Benefits

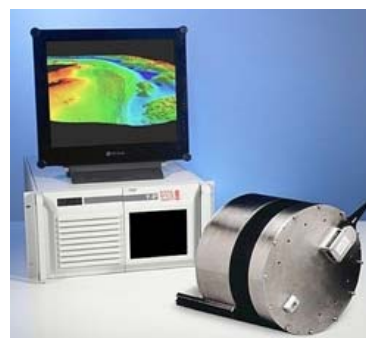
- portable hydrographic echo sounder
- dual frequency 30 / 200 kHz
- thermal recorder
- sediment classification
- Maximum water depths achieved are 80 meters (200 kHz) and 1000 m (30 kHz).

Multi-Beam Echo Sounder (MBES)

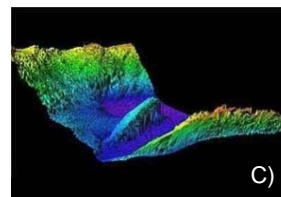
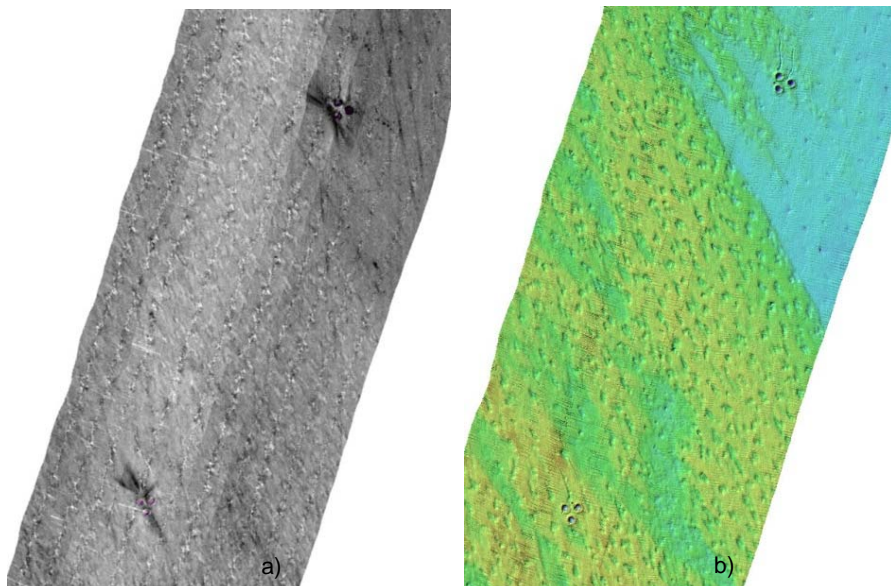
The SeaBat 7101

The SeaBat 7101 is a hi-res multi-beam sonar system that takes the latest advances in signal processing and data handling and delivers results you can trust.

With its 40Hz-ping rate, high density of equidistant soundings and real-time roll stabilization in shallow water, the 7101 is so accurate your surveys will beat international standards every time – even sailing at high speed. And be confident of reliable seafloor detection in all acoustic environments.



Seabat 7101 Multibeam echo sounder



Samples of MBES images

- a) the Backscatter image showing footprints on seafloor
- b) the Seafloor image with footprints
- c) Possible debris on seafloor