

**ROV (Remotely Operated underwater Vehicle) SYSTEMS**

**SeaBotix vLBV-300**

The vLBV is the latest in highly capable vectored ROVs offering a stable and powerful platform for a diverse range of applications.



**vLBV**

- Six (6) Brushless DC thrusters (4 vectored, 2 vertical)
- Auto heading, depth and trim
- Video overlay
- Temperature sensor



**Integrated Control System**

- Protective case fitted with monitor, surface power supply and operator control unit
- 38 cm (15 in) Color LCD monitor fitted in lid of case – waterproof
- vLBV operator control unit - removable from lower tray of integrated console
- Sunshade for direct sunlight operation



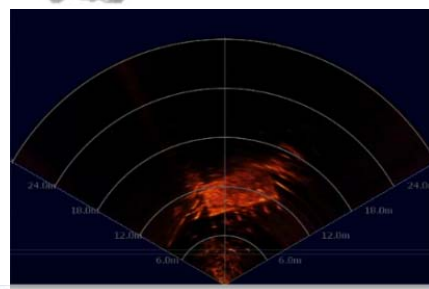
**Tether**

- 250 meters - 820 feet of tether
- 8.9 mm - 0.35 in diameter
- 100 kg f - 220 ft/lb working load
- 700 kg f - 1,540 ft/lb breaking strain
- Connectors and strain relief



**Cameras & Lighting**

- 3 x cameras : 2 x front cameras and 1 back camera
  - Standard camera: 600 line exView color camera - 0.001 lux
  - Main camera : High definition camera
- the LYNN video enhancer to help correct color real time creating an improved image for the operator.
- 2 x 1080 Lumen LED arrays tracking color camera



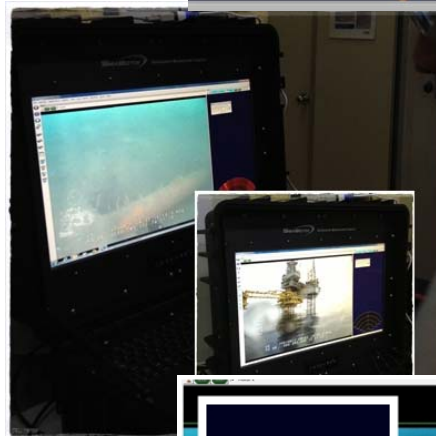
**The Tritech Micron scanning sonar**

- Provides sonar coverage at ranges up to 75 meters (252ft)

**Tracking System**

**AAE 310 Micro Beacon with RM90V Transducer**

- Transmit frequency range 25-32.5kHz
- Receive frequency range 16-26kHz



**Sonardyne Scout Plus USBL : 2<sup>nd</sup> tracking system**

- Sonardyne's Coastal Transponder is our position tracking system.
- The unit operates in the HF frequency band from 35-55 kHz.
- Depth rated to 500 Metres
- Alkaline battery packs give up to 18 months listening life

